



# GAT MONTHLY MEMBERSHIP PROGRESS REPORT

Results as of: 1/31/2022

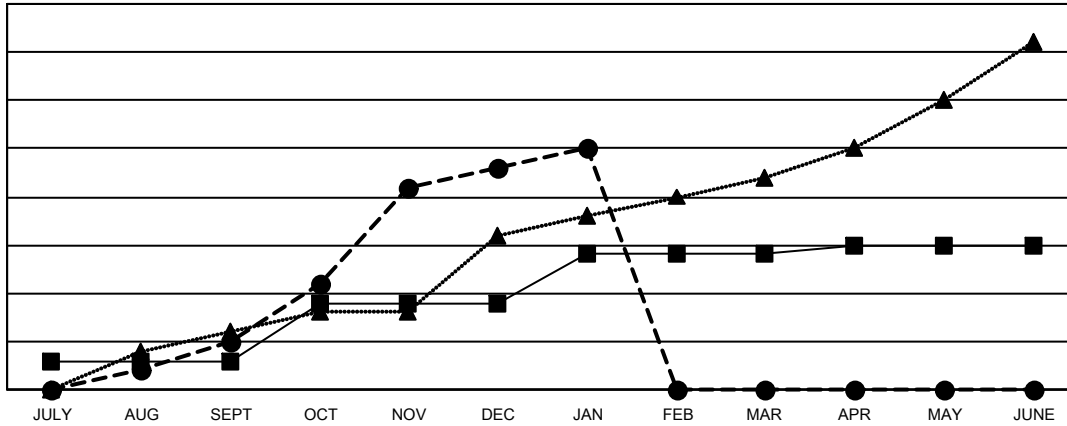
Multiple District 307

LOCATION: INDONESIA

| Clubs                 |               |           |               |
|-----------------------|---------------|-----------|---------------|
| RESULTS FOR 2021-2022 |               |           |               |
| QUARTER               | NEW CLUB GOAL | NEW CLUBS | DROPPED CLUBS |
| JULY/AUG/SEPT         | 3             | 5         | 13            |
| OCT/NOV/DEC           | 6             | 18        | 2             |
| JAN/FEB/MAR           | 5             | 2         | 3             |
| APR/MAY/JUNE          | 1             | 0         | 0             |

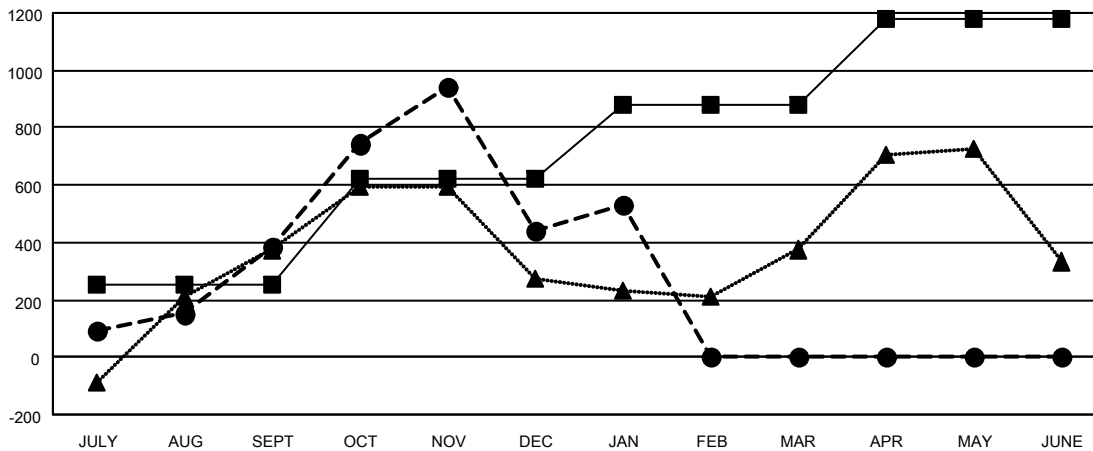
| Members               |                        |                      |  |
|-----------------------|------------------------|----------------------|--|
| RESULTS FOR 2021-2022 |                        |                      |  |
| QUARTER               | MEMBER GROWTH NET GOAL | MEMBER GROWTH ACTUAL | DROPPED MEMBERS ACTUAL (including transfers) |
| JULY/AUG/SEPT         | 250                    | 694                  | 290  |
| OCT/NOV/DEC           | 370                    | 929                  | 856  |
| JAN/FEB/MAR           | 260                    | 142                  | 43   |
| APR/MAY/JUNE          | 300                    | 0                    | 0  |

GOALS AND ACTUAL NEW CLUBS CUMULATIVE



- - CURRENT YEAR GOALS FOR NEW CLUBS
- - CURRENT YEAR ACTUAL NEW CLUBS
- ▲ - LAST YEAR ACTUAL NEW CLUBS

GOALS AND ACTUAL MEMBERS CUMULATIVE



- - MEMBER GROWTH NET GOAL
- - MEMBER GROWTH ACTUAL
- ▲ - LAST YEAR MEMBERSHIP ACTUAL

|                          |   |  |
|--------------------------|---|--|
| <b>DROPPED CLUBS: 18</b> | 228 CLUBS OF 379 ADDED 1 OR MORE NEW MEMBERS              | <b>GENDER DISTRIBUTION</b>             |
| <b>DROPPED MEMBERS</b>   | <a href="#">CLICK HERE FOR CUMULATIVE MEMBERSHIP DATA</a> | MALE 4,883 (43.73%)                    |
| DECEASED 41              |   | FEMALE 6,283 (56.27%)                  |
| CLUB CANCELLED 138       |   | NON BINARY 0 (0.00%)                   |
| OTHER 1,010              |   | PREFER NOT TO ANSWER 0 (0.00%)         |
| <b>TOTAL 1,189</b>       |   | <b>TOTAL FAMILY UNIT MEMBERS 2,837</b> |
|                          |   | FAMILY MEMBERS PAYING HALF DUES 1,652  |